

DWALL
TAREOSU
KCOLSEI-
YONTOLO-
RINS.

bien 30X912"X36"

ADONIS	4
ADRIA	6
ANABELL	8
ASTORIA	10
BRANO	15
BRILLO	13
CALACATTA MARMI	16
DELTA	18
ENZO	20
ESTELA	23
FAIR	24
FAMOUS	26
FIERELLO	30-31
MAJORI	38
MARMOL	32
MARVY	34
NUVOLA	36
PAREL	42
PERA	40
SANTE	46-47
SILVIO	38
TERRA	50-51
VENEZIA	56-54
VIGO	57
WAVY	58

Arslan Granit Seramik Yapı Malzemeleri Tic. A.Ş.
Şerifali Mh. Turgut Özal Blv. Aslan Plaza
No:208 34775 Ümraniye / İstanbul - Türkiye
Tel: +90 216 314 60 60
E-Mail: info@arslanseramik.com

ADONIS



30x90 12"x36" BEYAZ WHITE



30x90 12"x36" BEYAZ DEKOFON WHITE DECOFON



45x45 18"x18" MAT BEYAZ
MATTE WHITE



ADONIS

ADRIA



30x90 12x36" BEYAZ WHITE



30x90 12x36" KAHVE BROWN



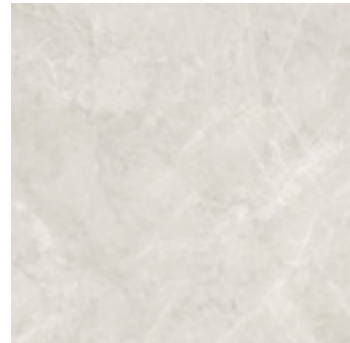
30x90 12x36" BEYAZ DEKOFON WHITE DECOFON



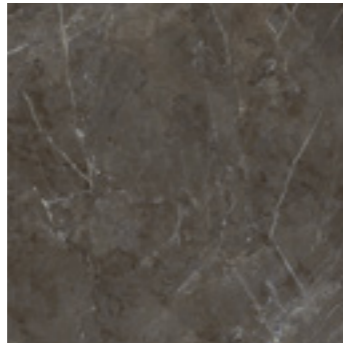
30x90 12x36" ANTRASİT ANTHRACITE



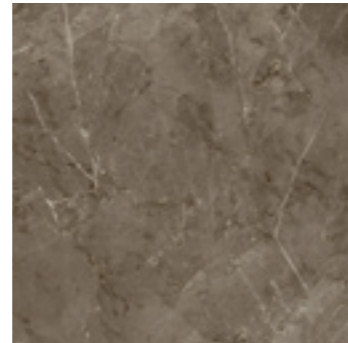
30x90 12x36" MIX DEKOFON DECOFON



45x45 18x18" BEYAZ WHITE



45x45 18x18" ANTRASİT ANTHRACITE



45x45 18x18" KAHVE BROWN



ADRIA

ANABELL



30x90 12"x36" KREM CREMA



30x90 12"x36" RIVER



45x45 18"x18" KREM CREMA



45x45 18"x18" RIVER



ANABELL

ASTORIA



30x90 12x36" CREMA 



30x90 12x36" GRİ GREY 



30x90 12x36" CREMA DEKOFON DECOFON 



30x90 12x36" GRİ DEKOFON DECOFON 



30x90 12x36" CREMA DEKOR DECOR 



30x90 12x36" GRİ DEKOR GREY DECOR 




30x90 12x36" TURKUAZ TURQUOISE 




30x90 12x36" KAHVE BROWN 



30x90 12x36" TURKUAZ DEKOFON TURQUOISE DECOFON 



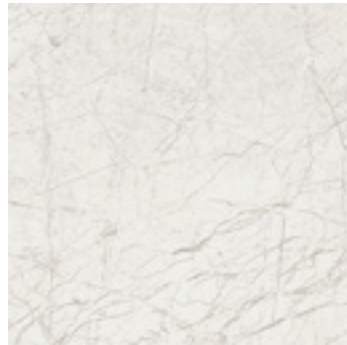
30x90 12x36" KAHVE DEKOFON BROWN DECOFON 



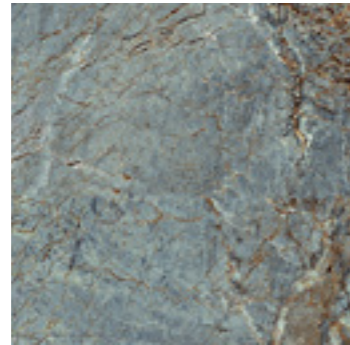
30x90 12x36" TURKUAZ DEKOR TURQUOISE DECOFON 



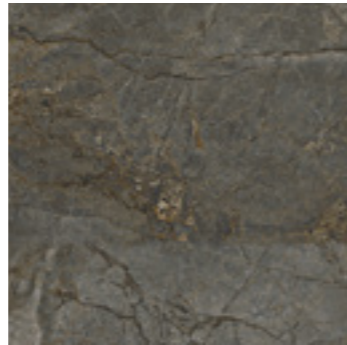
30x90 12x36" KAHVE DEKOR BROWN DECOR 



45x45 18x18" CREMA 



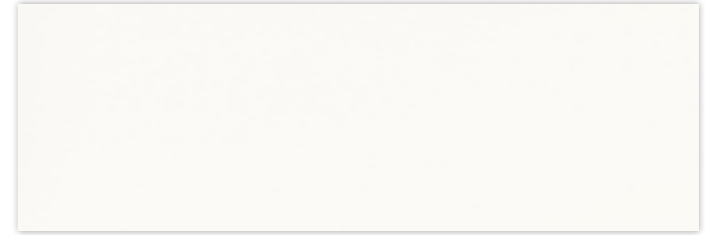
45x45 18x18" TURKUAZ TURQUOISE 



45x45 18x18" GREY 

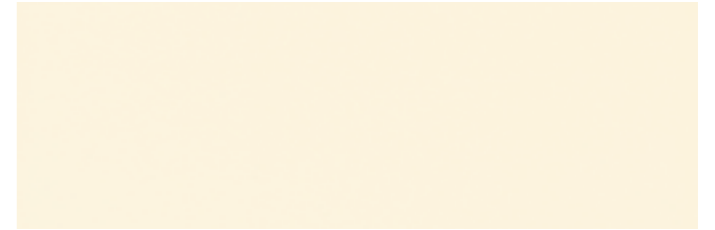


ASTORIA



30x90 12"x36" PARLAK BEYAZ GLOSSY WHITE

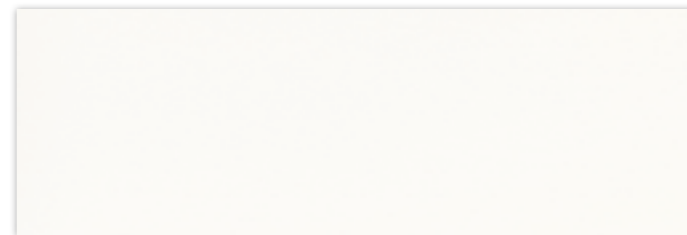
RGV



30x90 12"x36" PARLAK PERGAMON GLOSSY PERGAMON

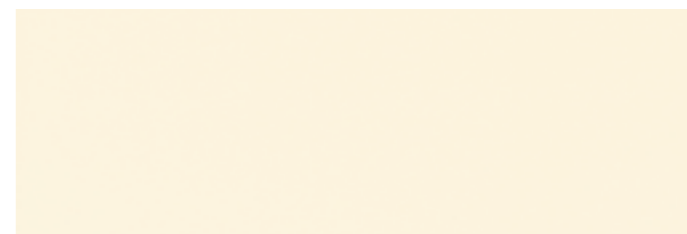
RGV





30x90 12"x36" MAT BEYAZ MATT WHITE

RMV



30x90 12"x36" MAT PERGAMON MATT PERGAMON

RMV



CALACATTA MARMİ

CALACATTA MARMİ



30x90 12"x36"

GRV³ | MRV³



30x90 12"x36" DEKOFON DECOFON

GRV³ | MRV³



30x90 12"x36" LEAF DEKOFON DECOFON

GRV³ | MRV³



30x90 12"x36" DEKOR DECOR

GRV³ | MRV³



45x45 18"x18"

MRV³

Bu serinin 30x90 ebatlı ürünleri hem MAT ve hem PARLAK olarak üretilmektedir.
This series is produced both of MATT and GLOSSY in 30x90 sizes. 17

DELTA



30x90 12x36" BEYAZ WHITE



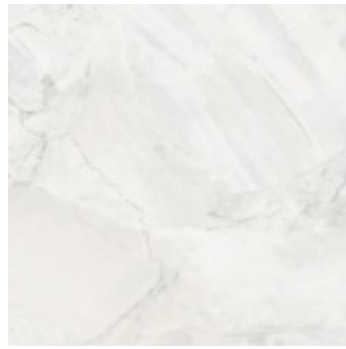
30x90 12x36" KAHVE BROWN



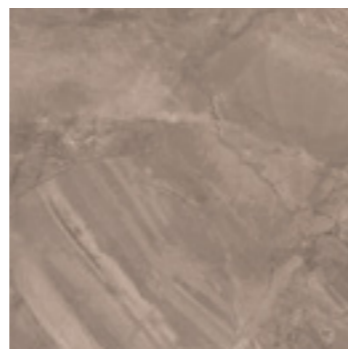
30x90 12x36" BEYAZ DEKOFON WHITE DECOFON



30x90 12x36" KAHVE DEKOFON BROWN DECOFON



45x45 18x18" BEYAZ WHITE



45x45 18x18" KAHVE BROWN



DELTA



30x90 12x36 BEYAZ WHITE

SRV3



30x90 12x36 GRİ GREY

SRV3



30x90 12x36 BEYAZ DEKOFON WHITE DECOFON

SRV3



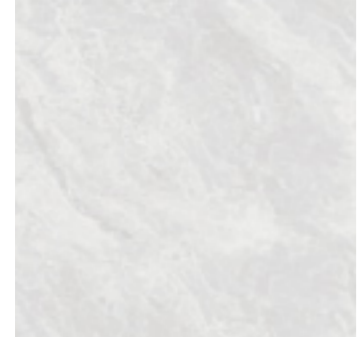
30x90 12x36 ANTRASİT ANTHRACITE

SRV3



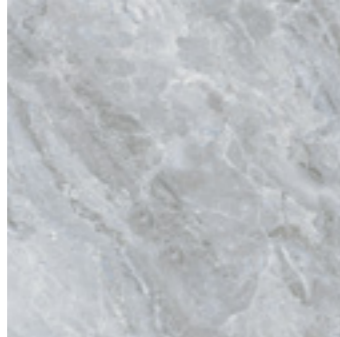
30x90 12x36 MIX DEKOFON DECOFON

SRV3



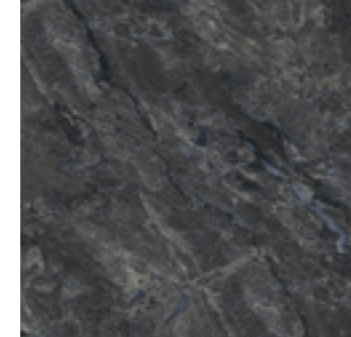
45x45 18x18 MAT BEYAZ MATTE WHITE

MRV3



45x45 18x18 GRİ GREY

MRV3



45x45 18x18 ANTRASİT ANTHRACITE

MRV3





ESTELA



30x90 12"x36" BONE



30x90 12"x36" GRİ GREY



30x90 12"x36" BONE DEKOR DECOR



30x90 12"x36" GRİ DEKOR GREY DECOR



30x90 12"x36" BONE LACE DEKOFON DECOFON



30x90 12"x36" GRİ LACE DEKOFON GREY LACE DECOFON

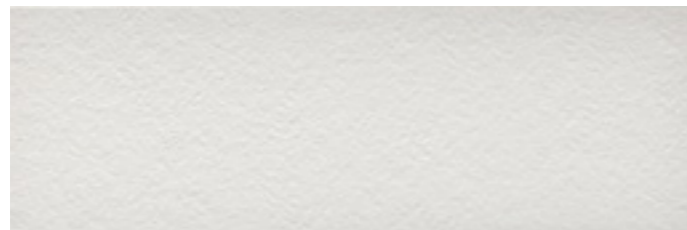


45x45 18"x18" BONE

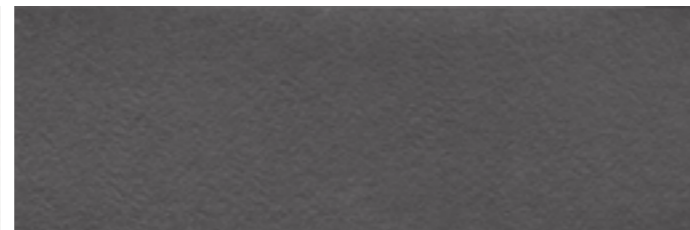


45x45 18"x18" GRİ GREY

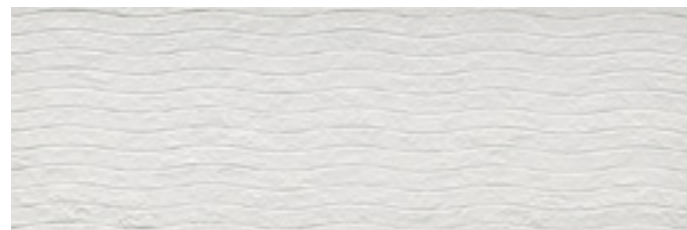




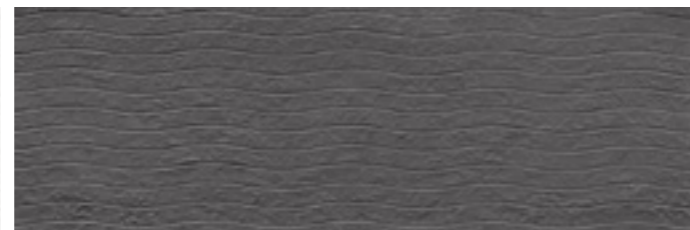
30x90 12x36" GRIS



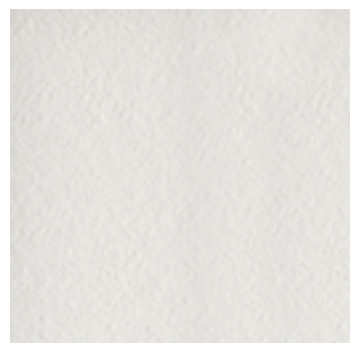
30x90 12x36" NERO



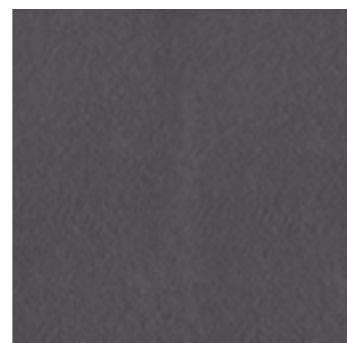
30x90 12x36" GRIS DEKOFON DECOFON



30x90 12x36" NERO DEKOFON DECOFON



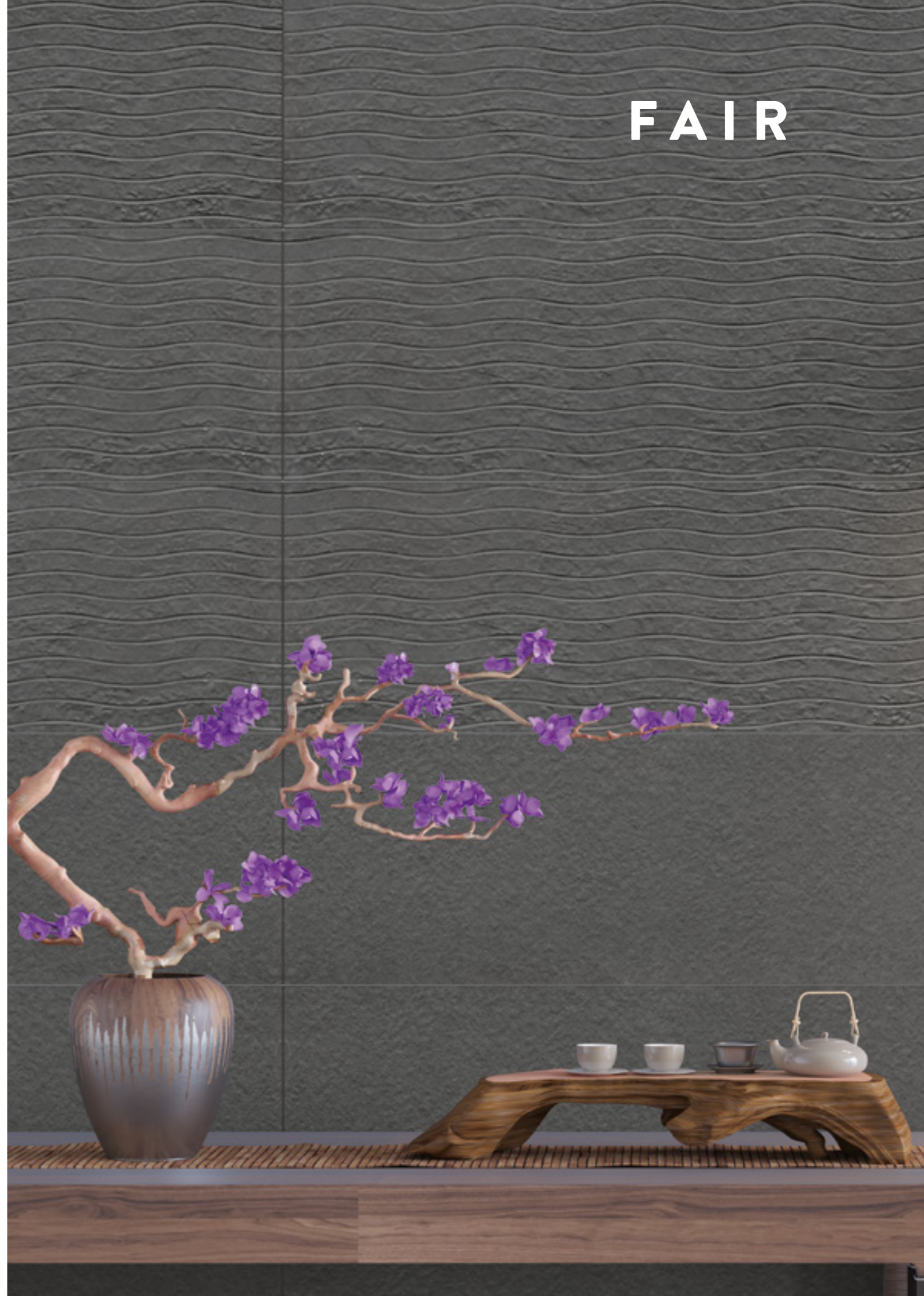
45x45 18x18" GRIS



45x45 18x18" NERO



FAIR

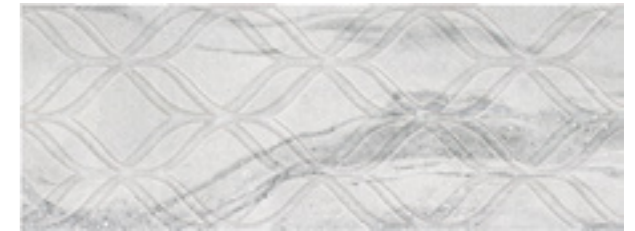




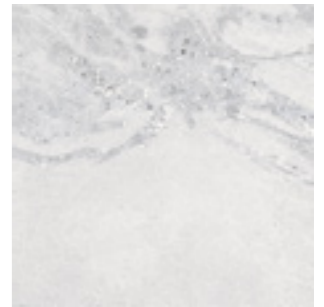
30x90 12"x36" GRI GREY



30x90 12"x36" GRI TRIANGLE DEKOFON
GREY TRIANGLE DECOFON



30x90 12"x36" GRI DEKOFON GREY DECOFON

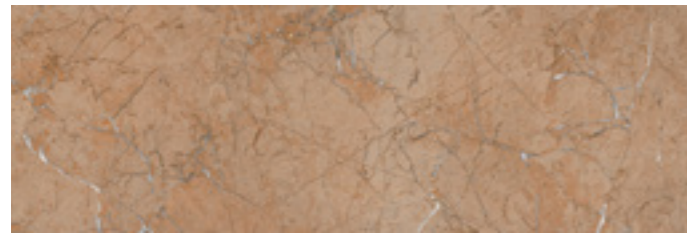


45x45 18"x18" GRI GREY





FIERELLO



30x90 12x36" SALMON



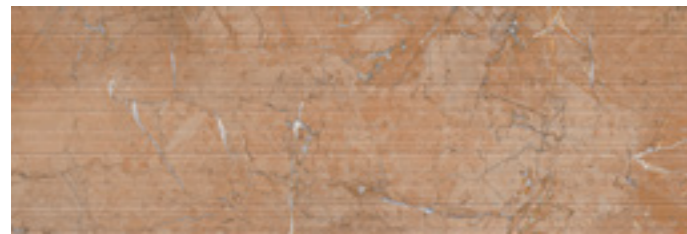
30x90 12x36" SMOKE



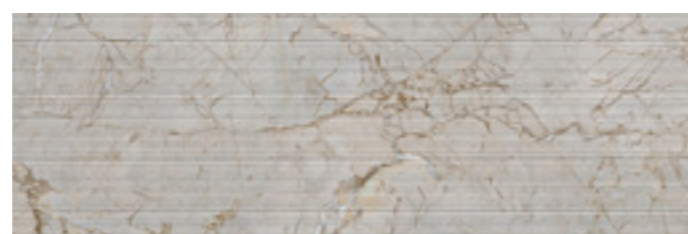
30x90 12x36" SALMON DEKOR DECOR



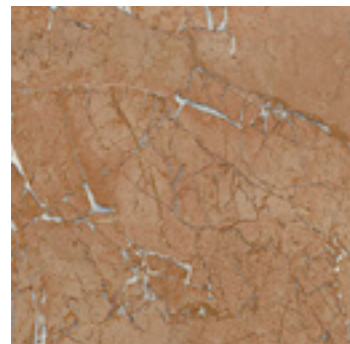
30x90 12x36" SMOKE DEKOR DECOR



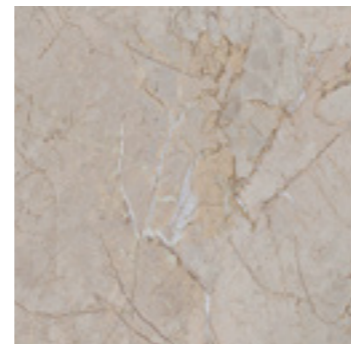
30x90 12x36" SALMON DEKOFON DECOFON



30x90 12x36" SMOKE DEKOFON DECOFON



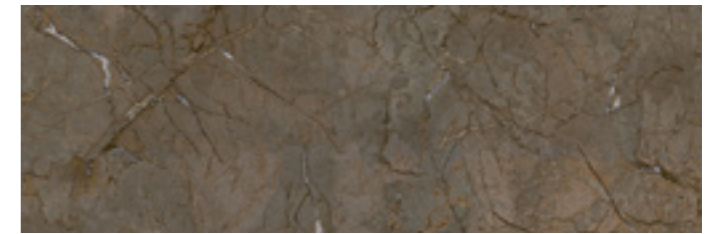
45x45 18x18" SALMON



45x45 18x18" SMOKE



30x90 12x36" MIX DEKOFON DECOFON



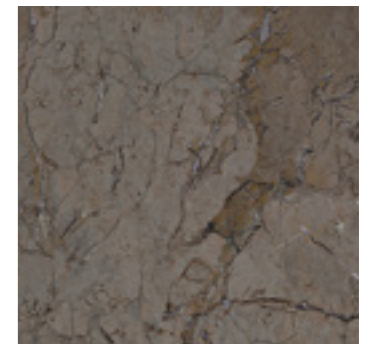
30x90 12x36" ANTHRACITE



30x90 12x36" ANTHRACITE DEKOR DECOR



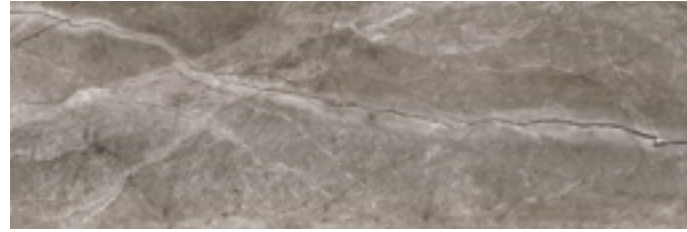
30x90 12x36" ANTHRACITE DEKOFON DECOFON



45x45 18x18" ANTHRACITE



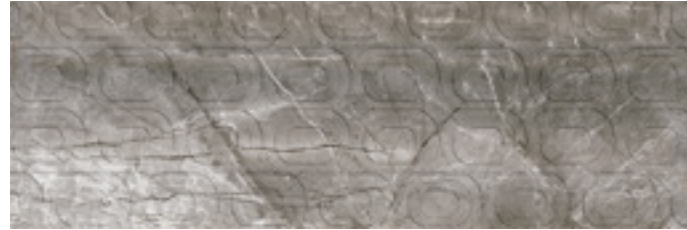
MARMOL



30x90 12"x36" SHADOW



30x90 12"x36" OLDLACE



30x90 12"x36" SHADOW DEKOFON DECOFON



30x90 12"x36" OLDLACE DEKOFON DECOFON



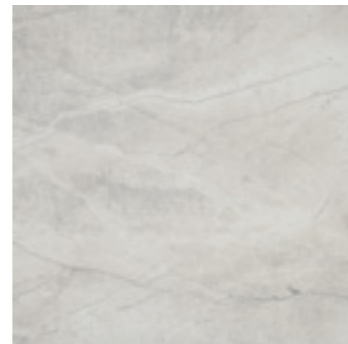
30x90 12"x36" SHADOW DEKOR DECOR



30x90 12"x36" OLDLACE DEKOR DECOR



45x45 18"x18" SHADOW



45x45 18"x18" OLDLACE



MARMOL



30x90 12"x36"

GRV² | MRV²



30x90 12"x36" DEKOFON DECOFON

GRV² | MRV²



30x90 12"x36" DEKOR DECOR

GRV² | MRV²

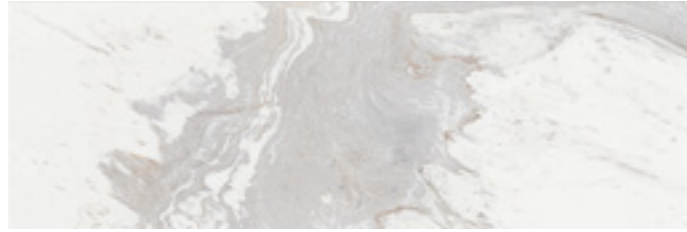


45x45 18"x18"

MRV²

Bu serinin 30x90 ebatlı ürünleri hem MAT ve hem PARLAK olarak üretilmektedir.
This series is produced both of MATT and GLOSSY in 30x90 sizes.





30x90 12"x36" BEYAZ WHITE



30x90 12"x36" BEYAZ DEKOFON WHITE DECOFON



30x90 12"x36" BEYAZ DEKOR WHITE DECOR



45x45 18"x18" BEYAZ WHITE



NUVOLA

MAJORI



30x90 12"x36" GRİ GREY

GRV'

SILVIO



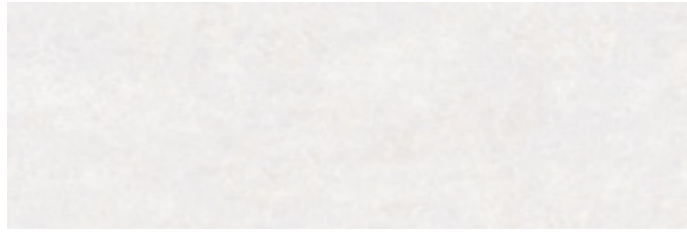
30x90 12"x36" BEYAZ WHITE

RMV'



MAJORI

PERA



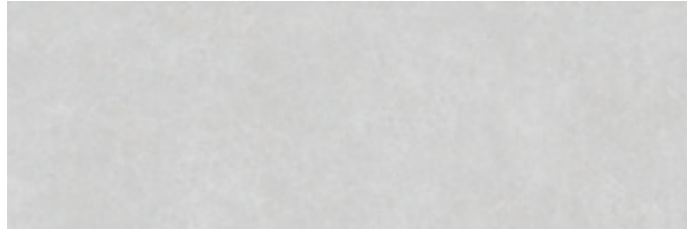
30x90 12x36" BEYAZ WHITE

RMV²



30x90 12x36" BEYAZ DEKOFON WHITE DECOFON

RMV²



30x90 12x36" A.GRI L.GREY

RMV²



30x90 A.GRI DEKOFON L.GREY DECOFON

RMV²



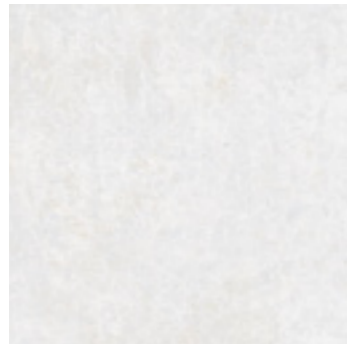
30x90 12x36" GRI GREY

RMV²



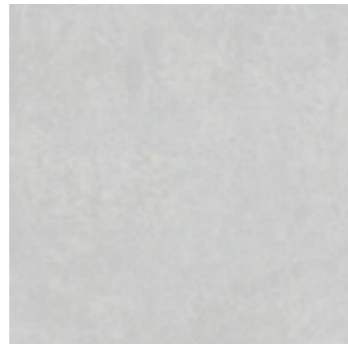
30x90 12x36" GRI DEKOFON GREY DECOFON

RMV²



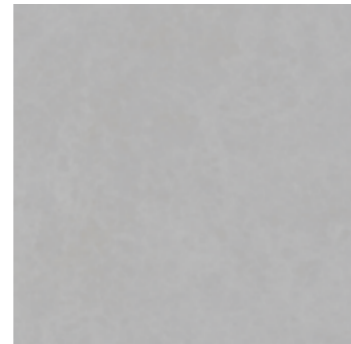
45x45 18x18" BEYAZ WHITE

RMV²



45x45 18x18" A.GRI L.GREY

RMV²



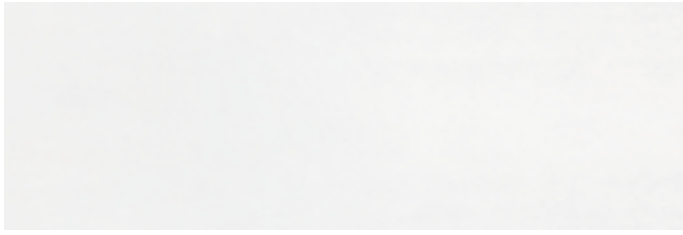
45x45 18x18" GRI GREY

RMV²



PERA

PAREL



30x90 12"x36" BEYAZ WHITE

RMV²



PAREL

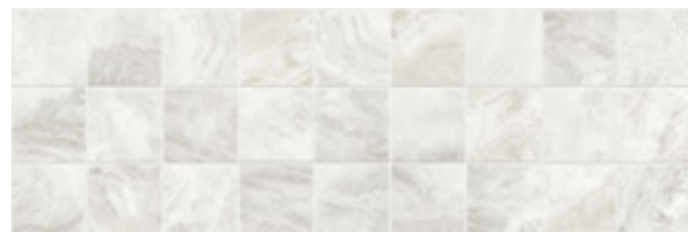


SANTE



30x90 12"x36" WHITE

↓ R G V²



30x90 12"x36" WHITE DEKOFON DECOFON

↓ R G V²



30x90 12"x36" HONEY

↓ R G V²



30x90 12"x36" HONEY DEKOFON DECOFON

↓ R G V²



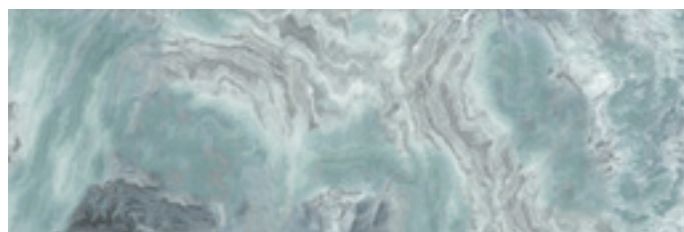
30x90 12"x36" AQUA

↓ R G V²



30x90 12"x36" AQUA DEKOFON DECOFON

↓ R G V²



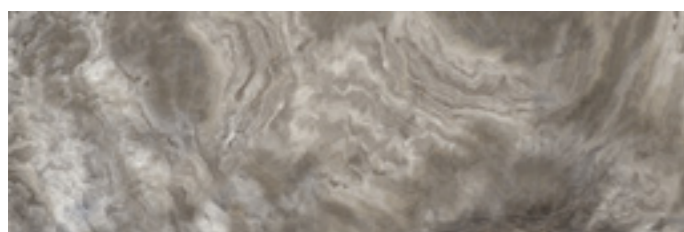
30x90 12"x36" TURQUOISE

↓ R G V²



30x90 12"x36" TURQUOISE DEKOFON DECOFON

↓ R G V²



30x90 12"x36" SMOKE

↓ R G V²



30x90 12"x36" SMOKE DEKOFON DECOFON

↓ R G V²



30x90 12"x36" WHITE DEKOR DECOR

↓ R G V²



30x90 12"x36" HONEY DEKOR DECOR

↓ R G V²



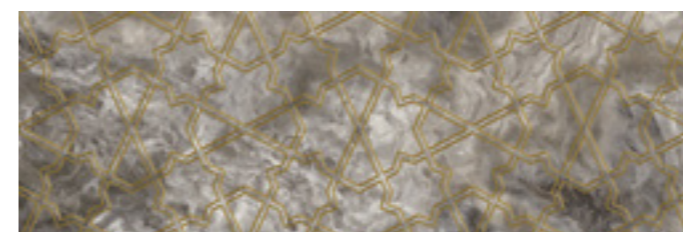
30x90 12"x36" AQUA DEKOR DECOR

↓ R G V²



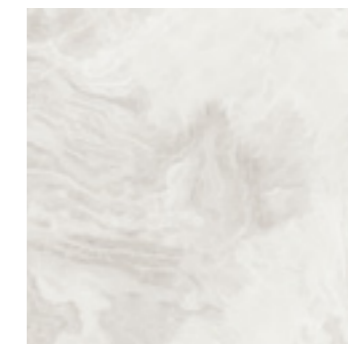
30x90 12"x36" TURQUOISE DEKOR DECOR

↓ R G V²



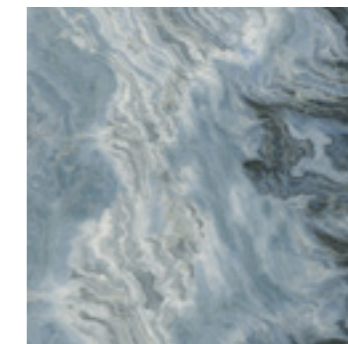
30x90 12"x36" SMOKE DEKOR DECOR

↓ R G V²



45x45 18"x18" WHITE

↓ R G V²



45x45 18"x18" AQUA

↓ R G V²



45x45 18"x18" SMOKE

↓ R G V²



TERRA



30x90 12"x36" BEYAZ WHITE



30x90 12"x36" GRİ GREY



30x90 12"x36" BEYAZ DEKOFON WHITE DECOFON



30x90 12"x36" GRİ DEKOFON GREY DECOFON



45x45 18"x18" BEYAZ WHITE



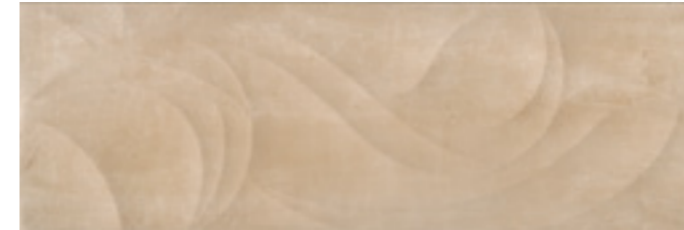
45x45 18"x18" GRİ GREY



30x90 12"x36" BEJ BEIGE



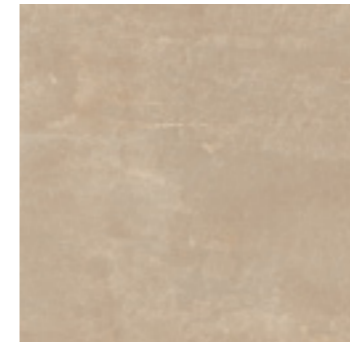
30x90 12"x36" TURKUAZ TURQUOISE



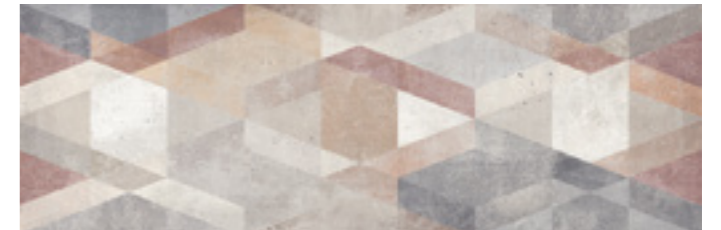
30x90 12"x36" BEJ DEKOFON BEIGE DECOFON



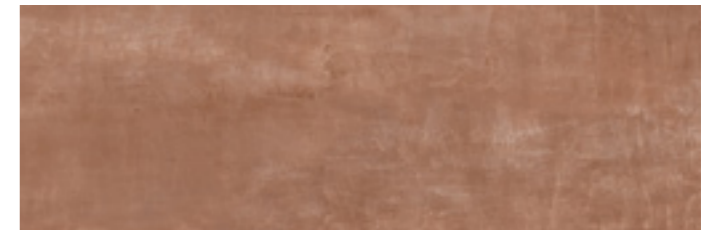
30x90 12"x36" TURKUAZ DEKOFON TURQUOISE DECOFON



45x45 18"x18" BEJ BEIGE



30x90 12"x36" MIX DEKOFON DECOFON



30x90 12"x36" GÜL KURUSU DRIED ROSE



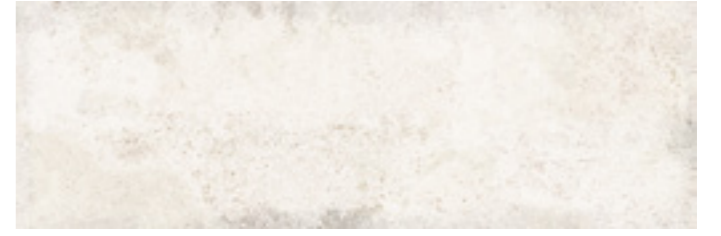
30x90 12"x36" GÜLKURUSU DEKOFON DRIED ROSE DECOFON





VENEZIA

VENEZIA



30x90 12"x36" BEYAZ WHITE

RGV³



30x90 12"x36" BEYAZ ZİGZAG DEKOFON WHITE ZIGZAG DECOFON

RGV³



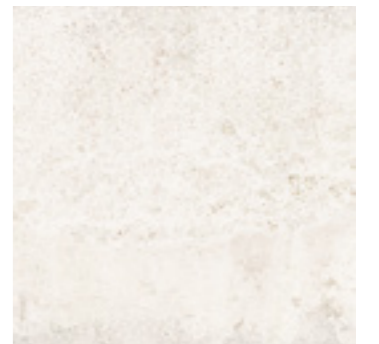
30x90 12"x36" BEYAZ PATCHWORK DEKOR
WHITE PATRCHWORK DECOR

RGV³



30x90 12"x36" MIX DEKOR DECOR

RGV³



45x45 18"x18" BEYAZ WHITE

RGV³

MOZAIKLER / MOSAICS



32x42 cm

30,5x30,5 cm

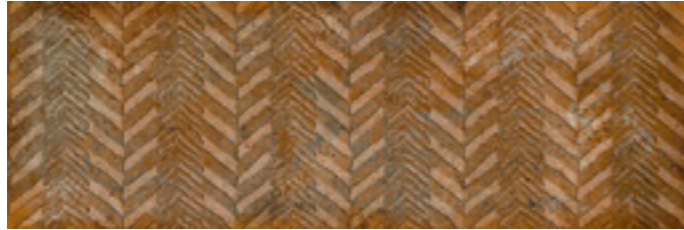
VENEZIA



30x90 12"x36" COTTO



30x90 12"x36" ANTRASİT ANTHRACITE



30x90 12"x36" COTTO ZİGZAG DEKOFON



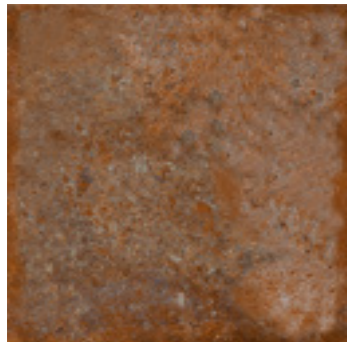
30x90 12"x36" ANTRASİT ZİGZAG DEKOFON



30x90 12"x36" COTTO PATCHWORK DEKOR



30x90 12"x36" ANTRASİT PATCHWORK DEKOR



45x45 18"x18" COTTO



45x45 18"x18" ANTRASİT ANTHRACITE



MOZAIKLER / MOSAICS



32x42 cm



30,5x30,5 cm



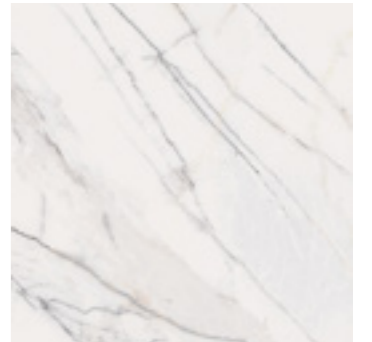
VENEZIA



30x90 12"x36" BEYAZ WHITE



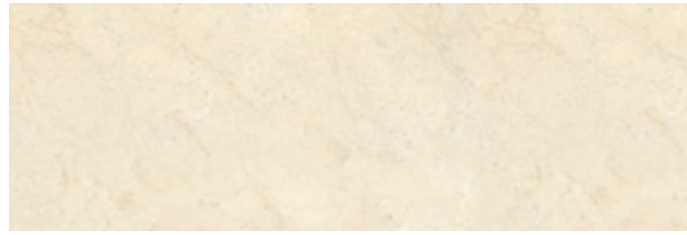
30x90 12"x36" BEYAZ DEKOFON WHITE DECOFON



45x45 18"x18" BEYAZ WHITE

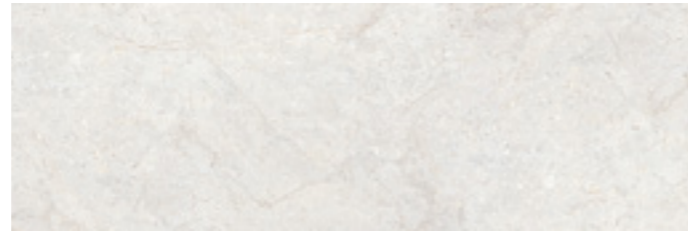


WAVY



30x90 12"x36" BONE

RSV²



30x90 12"x36" GRI GREY

RSV²



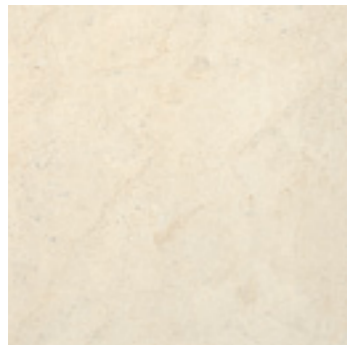
30x90 12"x36" BONE DEKOFON DECOFON

RSV²



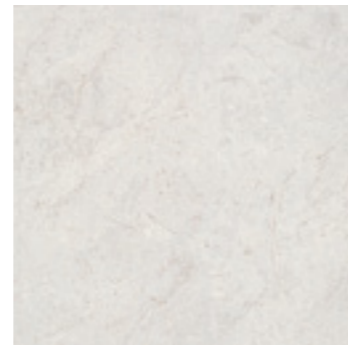
30x90 12"x36" GRI DEKOFON GREY DECOFON

RSV²



45x45 18"x18" BONE

RMV³



45x45 18"x18" GRI GREY

RMV³



WAVY

TEKNİK
ÖZELLİKLER
TECHNICAL
SPECIFICATIONS

YER KAROLARI
FLOOR TILES

KONU THEME	BIEN BIEN STANDARDS	TS EN 14411 Annex-H		TEST YÖNTEMİ TEST METHOD
UZUNLUK VE GENİŞLİK LENGTH AND WIDTH	± 0,5 %	± 0,6 %	± 2,0 mm	TS EN ISO 10545 - 2
KALINLIK THICKNESS	± 5 %	± 5 %	± 0,5 mm	TS EN ISO 10545 - 2
KENAR DÜZGÜNLÜĞÜ STRAIGHTNESS OF SIDES	± 0,3 %	± 0,5 %	± 1,5 mm	TS EN ISO 10545 - 2
GÖNYEDEN SAPMA RECTANGULARITY	± 0,5 %	± 0,5 %	± 2,0 mm	TS EN ISO 10545 - 2
MERKEZ EĞRİLİĞİ CENTER CURVATURE	± 0,3 %	± 0,5 %	± 2,0 mm	TS EN ISO 10545 - 2
KENAR EĞRİLİĞİ EDGE CURVATURE	± 0,3 %	± 0,5 %	± 2,0 mm	TS EN ISO 10545 - 2
KÖŞE EĞRİLİĞİ WARPAGE	± 0,3 %	± 0,5 %	± 2,0 mm	TS EN ISO 10545 - 2
YÜZEY KALİTESİ SURFACE QUALITY	% 5 kusurlu / defective	% 5 kusurlu / defective		TS EN ISO 10545 - 2
SU EMME WATER ABSORPTION	En fazla / Max 3,0 %	En fazla / Max 3,0 %		TS EN ISO 10545 - 3
KIRILMA DAYANIMI (≥7,5 mm) BREAKING STRENGTH (≥7,5 mm)	Min. 1100 N	Min. 600 N		TS EN ISO 10545 - 4
KIRILMA DAYANIMI (<7,5 mm) BREAKING STRENGTH (<7,5 mm)	Min. 700 N	Min. 700 N		TS EN ISO 10545 - 4
EĞİLME MUKAVEMETİ MODULUS OF RUPTURE	Min. 30 N/mm ²	Min. 30 N/mm ²		TS EN ISO 10545 - 4
ÇARPMA DAYANIMI IMPACT RESISTANCE	Dayanıklı / Resistant	Gerekli / Required		TS EN ISO 10545 - 5
AŞINMA SINIFI ABRASION CLASS	En az II / Min. II	Gerekli / Required		TS EN ISO 10545 - 7
ISIL ŞOK DAYANIMI THERMAL SHOCK RESISTANCE	Dayanıklı / Resistant	Gerekli / Required		TS EN ISO 10545 - 9
ÇATLAMA DİRENCİ CRACKING RESISTANCE	Dayanıklı / Resistant	Gerekli / Required		TS EN ISO 10545 - 11
DONA DAYANIM FROST RESISTANCE	Dayanıklı / Resistant	Gerekli / Required		TS EN ISO 10545 - 12
ASİT/ALKALİLERE DAYANIM RESISTANCE TO ACIDS/ALKALIS	Sınıf / Class GLB-GHB	Üretici beyan eder / as declared		TS EN ISO 10545 - 13
EV KİMYASALLARINA DAYANIM RESISTANCE TO HOUSEHOLD CHEM.	En az sınıf / Min. Class GB	En az sınıf / Min. Class GB		TS EN ISO 10545 - 13
LEKELENMEYE DAYANIM RESISTANCE TO STAINING	En az sınıf 3 / Min. Class 3	En az sınıf 3 / Min. Class 3		TS EN ISO 10545 - 14

DUVAR KAROLARI
WALL TILES

KONU THEME	BIEN BIEN STANDARDS	TS EN 14411 Annex-K		TEST YÖNTEMİ TEST METHOD
UZUNLUK VE GENİŞLİK LENGTH AND WIDTH	± 0,4 %	± 0,5 %	± 2,0 mm	TS EN ISO 10545 - 2
KALINLIK THICKNESS	± 10 %	± 10 %	± 0,5 mm	TS EN ISO 10545 - 2
KENAR DÜZGÜNLÜĞÜ STRAIGHTNESS OF SIDES	± 0,2 %	± 0,3 %	± 1,5 mm	TS EN ISO 10545 - 2
GÖNYEDEN SAPMA RECTANGULARITY	± 0,4 %	± 0,5 %	± 2,0 mm	TS EN ISO 10545 - 2
MERKEZ EĞRİLİĞİ CENTER CURVATURE	+ 0,4 % - 0,2 %	+0,5 % - 0,3 %	+ 2,0 % - 1,5 %	TS EN ISO 10545 - 2
KENAR EĞRİLİĞİ EDGE CURVATURE	+ 0,4 % - 0,2 %	+0,5 % - 0,3 %	+ 2,0 % - 1,5 %	TS EN ISO 10545 - 2
KÖŞE EĞRİLİĞİ WARPAGE	± 0,4 %	± 0,5 %	± 2,0 mm	TS EN ISO 10545 - 2
YÜZEY KALİTESİ SURFACE QUALITY	% 5 kusurlu / defective	% 5 kusurlu / defective		TS EN ISO 10545 - 2
SU EMME WATER ABSORPTION	% 10 - 20	% 10 - 20		TS EN ISO 10545 - 3
KIRILMA DAYANIMI (≥7,5 mm) BREAKING STRENGTH (≥7,5 mm)	Min. 600 N	Min. 600 N		TS EN ISO 10545 - 4
KIRILMA DAYANIMI (<7,5 mm) BREAKING STRENGTH (<7,5 mm)	Min. 200 N	Min. 200 N		TS EN ISO 10545 - 4
EĞİLME MUKAVEMETİ MODULUS OF RUPTURE	Min. 15 N/mm ²	Min. 15 N/mm ²		TS EN ISO 10545 - 4
ISIL ŞOK DAYANIMI THERMAL SHOCK RESISTANCE	Dayanıklı / Resistant	Gerekli / Required		TS EN ISO 10545 - 9
ÇATLAMA DİRENCİ CRACKING RESISTANCE	Dayanıklı / Resistant	Gerekli / Required		TS EN ISO 10545 - 11
ASİT/ALKALİLERE DAYANIM RESISTANCE TO ACIDS/ALKALIS	En az sınıf / Min. Class GLB - GHB	Üretici beyan eder / as declared		TS EN ISO 10545 - 13
EV KİMYASALLARINA DAYANIM RESISTANCE TO HOUSEHOLD CHEM.	En az sınıf / Min. Class GB	En az sınıf / Min. Class GB		TS EN ISO 10545 - 13
LEKELENMEYE DAYANIM RESISTANCE TO STAINING	En az sınıf 3 / Min. Class 3	En az sınıf 3 / Min. Class 3		TS EN ISO 10545 - 14

PAKETLEME BİLGİLERİ

PACKAGING DETAILS

ÜRÜN TİPİ / PRODUCT TYPE	EBAT / SIZE	KENAR / EDGE	KUTU BOX			PALET PALLET			
			ADET PIECE	MİKTAR QUANTITY (m ²)	AĞIRLIK WEIGHT (kg)	KUTU BOX	MİKTAR QUANTITY (m ²)	AĞIRLIK WEIGHT (kg)	PALET EBADI
Duvar Karosu/Wall Tile	30x90 / 12"x36"	Rektifiyeli/Rectified	4	1,080	16,00	82	88,560	1325	80x120
Yer Karosu/Floor Tile	45x45 / 18"x18"	Rektifiyeli/Rectified	8	1,598	29,00	44	70,300	1310	80x120
Dekor/Decor	30x90 / 12"x36"	Rektifiyeli/Rectified	4	1,800	16,00	-	-	-	-
Mozaik/Mosaic	32x42	Rektifiyeli/Rectified	11	0,88	13,00	-	-	-	-
Mozaik/Mosaic	30,5x30,5	Rektifiyeli/Rectified	11	1,03	15,00	-	-	-	-

	DUVAR KAROSU WALL TILES		YER KAROSU FLOOR TILES		PORSELEN PORCELAIN
G	PARLAK GLOSSY	M	MAT MATTE	S	SATEN SATIN
R	REKTİFİYELİ RECTIFIED	fl	FULL LAPPATO FULL LAPPATO	sl	SEMI LAPPATO SEMI LAPPATO
tp	TEKNİK PORSELEN TECHNICAL PORCELAIN		ASİTLERE HASSAS ACID SENSITIVE		


GÖRÜNÜM FARKLILIKLARI DERECELERİ
SHADE VARIATION

v1	AYNI GÖRÜNÜM UNIFORM APPEARANCE	v2	HAFİF FARKLILIK SLIGHT VARIATION
v3	ÖNEMLİ FARKLILIK MODERATE VARIATION	v4	RASTGELE FARKLILIK RANDOM VARIATION

CTDA değeri olan aynı üretim partisindeki karoların, görünüm farklılıklarını (doku, renk, ton ve motif bakımından) ifade eden teknik özellikler, dört farklı kriterde değerlendirilir.

The color shade or shades of all tiles vary to some degree from piece to piece, for each single production. At least several pieces from the same production should be reviewed whenever possible to determine acceptable color shade variations. Any questions or concerns about your tile selection should be clarified prior to installation.

YER KAROLARININ AŞINMA DİRENÇLERİ
ABRASION RESISTANCE OF FLOOR TILES

	DÜŞÜK YOĞUN TRAFİK LOW TRAFFIC		ORTA YOĞUN TRAFİK MEDIUM TRAFFIC
	YOĞUN TRAFİK HEAVY TRAFFIC		ÇOK YOĞUN TRAFİK EXTRA TRAFFIC

DÜŞÜK-YOĞUN TRAFİK: Aşındırıcı dış etkenlere kapalı, yumuşak ayakkabı ile dolaşılacak alanlarda kullanılan karolardır. Oturma odası, mutfak, antre, merdivenler gibi orta yoğun trafığa maruz kalacak alanlara uygun değildir.

LOW TRAFFIC: Tiles suited for general residential traffic. For areas that are walked on by soft soled or normal footwear without any scratching dirt. Not suitable for kitchen, entrance halls, stairs and other areas subjected to medium traffic.

ORTA-YOĞUN TRAFİK: Hareket yoğunluğunun orta-yoğun derecede olduğu yerlerde, kum gibi aşındırıcı malzemelerden korunan mekanlarda kullanılan karolardır. Koridor, mutfak, balkon, teras gibi tüm evin içinde, otel odalarında fazla trafiğin yaşanmadığı ofislerde kullanılabilir.

MEDIUM TRAFFIC: Tiles suitable for areas subject to frequent foot traffic yet protected from abrasive agents such as sand, gravel and soil; for example corridors, private kitchens, balconies, terraces, hotel rooms.

YOĞUN TRAFİK: Hareket yoğunluğunun yüksek olduğu, dışarıyla devamlı temas halindeki alanlarda kullanılan karolardır. Mağaza, otel, restoran, bar, okul ve ofis gibi yerlerde kullanılabilir.

HEAVY TRAFFIC: Tiles suitable for areas subject to frequent foot traffic and heavy abrasion, for example shops, hotels, restaurants, bars, schools, offices. Particularly suitable for areas in direct contact with outside.

ÇOK YOĞUN TRAFİK: Trafik aşırı yoğun olduğu iç ve dış mekanlarda kullanılmaya uygundur.

EXTRA TRAFFIC: Suitable for heavy traffic indoor and outdoor environments.

TSE
ÇİFT YILDIZ KRİTERİNE UYGUNLUK BELGESİ
TSE CERTIFICATE OF CONFORMITY TO DOUBLE STAR CRITERIA



EN 14411
TÜRK STANDARTLARINA UYGUNLUK BELGESİ
TURKISH STANDARD FOR CERAMIC TILES



ISO 9001
KALİTE YÖNETİM SİSTEMLERİ SERTİFİKASI
CERTIFICATE OF QUALITY MANAGEMENT SYSTEMS



OHSAS 18001
İŞ SAĞLIĞI VE GÜVENLİĞİ YÖNETİM SİSTEMLERİ SERTİFİKASI
CERTIFICATE OF OCCUPATIONAL HEALTH AND SAFETY MANAGEMENT SYSTEMS



ISO 14001
ÇEVRE YÖNETİM SİSTEMLERİ SERTİFİKASI
CERTIFICATE OF ENVIRONMENTAL MANAGEMENT SYSTEMS



ISO 27001
BİLGİ GÜVENLİĞİ YÖNETİM SİSTEMLERİ BELGESİ
INFORMATION SECURITY MANAGEMENT SYSTEMS



CE
CE UYGUNLUK BEYANI
DECLARATION OF PERFORMANCE



AEO
YETKİLENDİRİLMİŞ YÜKÜMLÜLÜK STATÜSÜ SERTİFİKASI
AUTHORISED ECONOMIC OPERATOR CERTIFICATE



GREENGUARD
PRODUCT CERTIFIED FOR LOW CHEMICAL EMISSIONS - GOLD



ÖDÜLLERİMİZ AWARDS

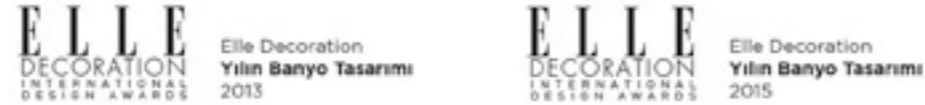
A'DESIGN AWARD



IDA DESIGN AWARDS



ELLE DECORATION INTERNATIONAL DESIGN AWARDS



RAF ÖDÜLLÜ AWARD



REDDOT DESIGN AWARD



bien

KULLANIM KILAVUZU

Aşağıdaki bilgiler karoların kullanımında en fazla verimi almak ve uzun süreli kullanım sağlamak adına yol gösterici olması amacıyla hazırlanmıştır.

KARO SEÇİMİ

• Seramik malzemelerin kullanım koşullarına uygun ve uzun ömürlü olması adına seçimlerinin özenle yapılması gerekmektedir. Kullanım alanına göre aşağıdaki sınıflandırma dikkate alınarak seçim yapılmalıdır.

1. Duvar Karosu: İç mekan duvar
2. Yer Karosu: İç mekan yer ve duvar
3. Porselen Karo: İç mekan yer ve duvar, dış mekan yer ve duvar ve cephe
4. Teknik Porselen Karo: İç mekan yer ve duvar, dış mekan yer ve duvar ve cephe

• Ürünlerin kullanım alanlarının özellikleri ile uyumlu olması verimliliği arttırmaktadır. Bu nedenle yaya trafiğinin ya da aşınmanın yüksek olduğu alanlarda trafik yoğunluğuna uygun ürünlerin tercih edilmesi faydalı olacaktır. İlgili trafik yoğunluğu bilgileri ürünlerin yanında yer almaktadır.

UYGULAMADA DİKKAT EDİLMESİ GEREKEN KONULAR

• Ürünler uygulanırken uygulama talimatlarına dikkat edilmelidir. Karolar uygulanmadan önce ton ve kalibre kontrolleri yapılmalı, aynı alana uygulanacak ürünlerin aynı tonda ve kalibrede olmasına özen gösterilmelidir. Desen takibi yapan ürünler aynı yönde döşenmelidir. İlgili talimatlar kutular üzerinde yer almaktadır.

• Karolar şaşırtmacalı uygulamalar yapılarak da uygulanmaktadır. Özellikle dikdörtgen formdaki ahşap görünümlü ürünlerde sıklıkla şaşırtmaca yöntemi kullanılmaktadır. Karo üretiminde çok yüksek ısılar kullanılması nedeniyle TSE standartlarında deformasyonlar ile karşılaşılabilir. Bu nedenle büyük ebatlı ürünlerde kama (takoz) uygulaması ile uygulanması son derece faydalı olacaktır. Bu yöntem zemin ve işçilik kaynaklı hataları ortadan kaldıracak, ürünlerin üretimi sırasında oluşan kabul edilebilir deformasyonları da en az seviyeye indirecektir.

• Karolar belli bir derz aralığı bırakılarak uygulanmalıdır. İlgili derz aralıkları; Rektifiye edilmiş karolarda minimum 1 mm en iyi sonuç için 2 mm, rektifiye edilmemiş karolarda minimum 2 mm en iyi sonuç için 3 mm olacak şekilde verilmelidir.

KULLANIM KOŞULLARI

• Yaşam alanlarını kaplayan seramik karolar dekor ve bordür grupları ile daha hareketli ve zengin görünüme kavuşmaktadır. Bu nedenle bordür ve dekor ürünlerin dekoratif amacı daha ön plandadır. Bu ürünlerin yüzey dayanıklılıkları ve aşınma değerleri diğer ürünler kadar yüksek olmayabilir. Dekor ve bordür ürünlerde altın, platin, bakır gibi metalik renkler kullanılmaktadır. Bu tip metalik renkler yoğun asit içerikli temizlik maddeleri ile aşınmakta ve zaman içerisinde zarar görmektedir. Bu nedenle bordür ve dekor ürünlerinin asitli temizlik maddeleri ile temizlenmemesi, sabunlu ya da nemli bir bez ile temizlenmesi gerekmektedir. İlgili bilgileri kataloğumuzda ürün çevresinde görebilirsiniz.

USER'S MANUAL

The information provided below has been prepared in order to guide the user for achieving maximum efficiency in usage of the tiles and ensuring usage for a long time.

SELECTION OF THE TILES

• Selection of ceramic materials has to be done with care in order that they are suitable for the usage conditions and they have a long life. Selection has to be made by taking into account the classification provided below based on the area of usage.

1. Wall Tiles: For indoor walls
2. Floor Tiles: For indoor floors and walls
3. Porcelain Tiles: For indoor floors and walls, outdoor floors, walls and facades
4. Technical Porcelain Tiles: For indoor floors and walls, outdoor floors, walls and facades

• Suitability of the products with the specifications of usage areas increases efficiency. As such, it would be beneficial to select products which are suitable for traffic intensity in areas where pedestrian traffic intensity is high. Information as to relevant traffic intensity is provided with the products.

ISSUES TO BE CONSIDERED IN APPLICATION

• Instructions must be followed carefully while applying the tiles. Tone and calibration controls of the tiles must be made before the application and care should be taken to ensure that products to be applied to an area are in the same tone and calibration. Products, with patterns following each other, must be laid in the same direction. The relevant instructions are provided on the boxes.

• Tiles are also applied in twisted layout applications. Twisting method is frequently used especially in rectangular form wood-like products. There may be deformations according to TSI standards due to usage of very high temperature during production of tiles. As such, wedge application it is very useful while applying big size products. This method will eliminate the defects arising from floor and labor and minimize considerable deformation levels which can occur during the production.

• The tiles should be applied with a certain joint space. Relevant joint spaces should be as follows: minimum in 1 mm in rectified tiles and 2 mm for best results and minimum 2 mm in unrectified tiles and 3 mm for best results.

USAGE CONDITIONS

• Ceramic tiles which cover living areas are getting more active and richer appearance with décor and border groups. As such, decorative purpose of décor and border products stands out more. The surface resistances and abrasion resistances of these products are not high compared to other products. Décor and border products contain metallic colors such as gold, platinum and copper. These products with metallic colors are abraded because of cleaning products which contains acid and they may get damaged by time. As such, décor and border products should not be cleaned with acid cleaning agents and must be cleaned with soap or with a damp cloth. You can see relevant information in our catalog near the product.